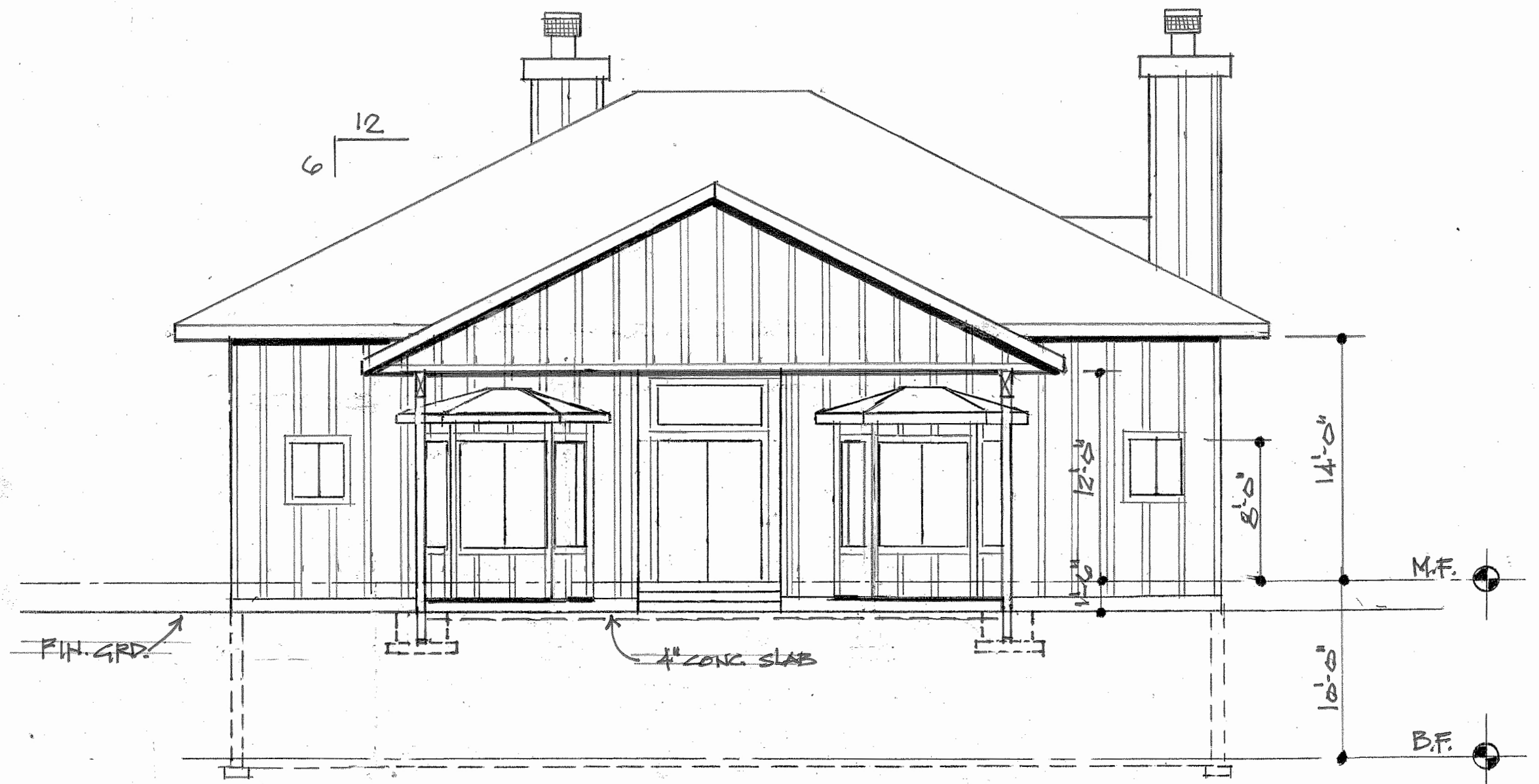


**EAST ELEVATION**  
SCALE: 1/8" = 1'-0"

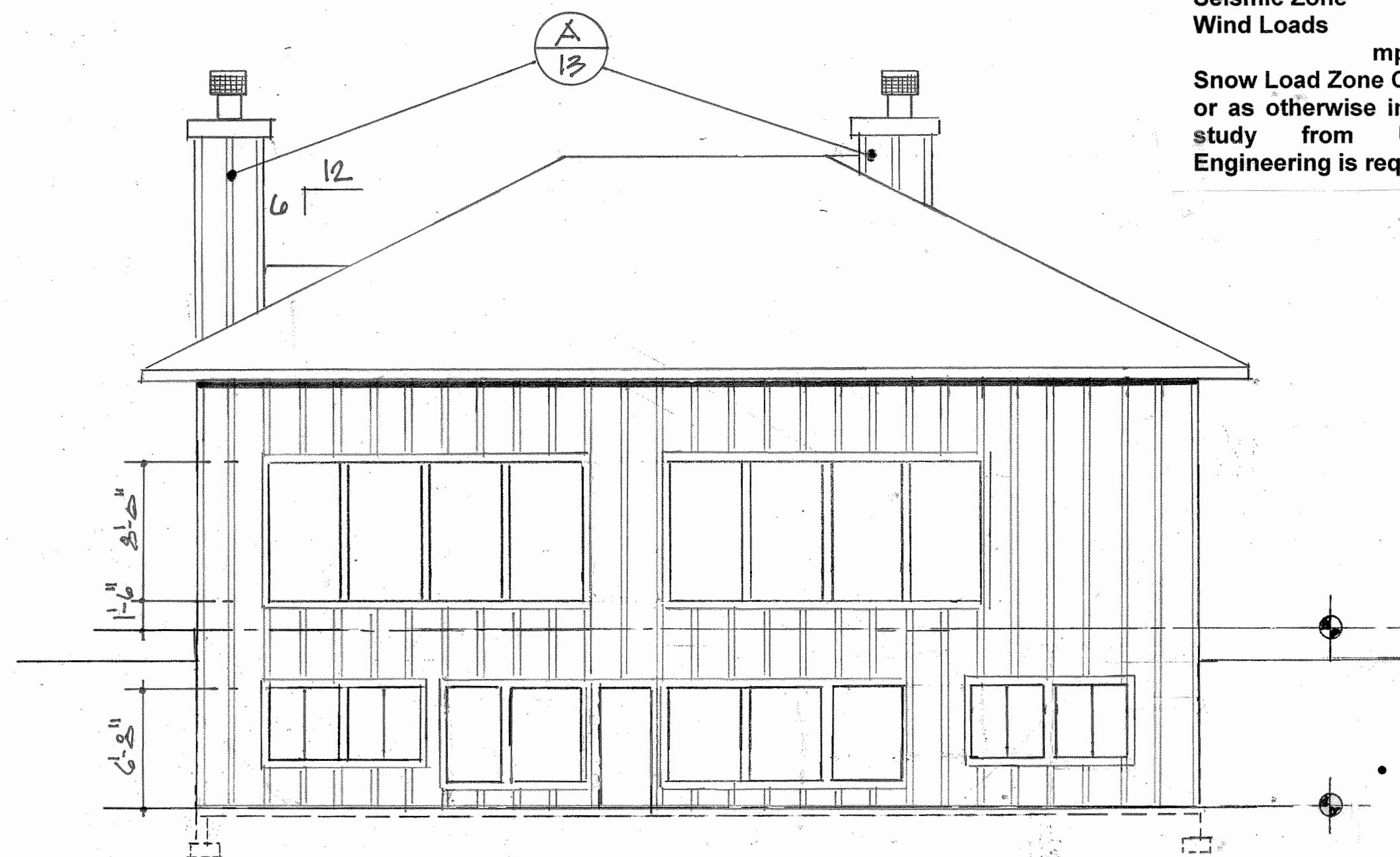


**NORTH ELEVATION**  
SCALE: 1/8" = 1'-0"

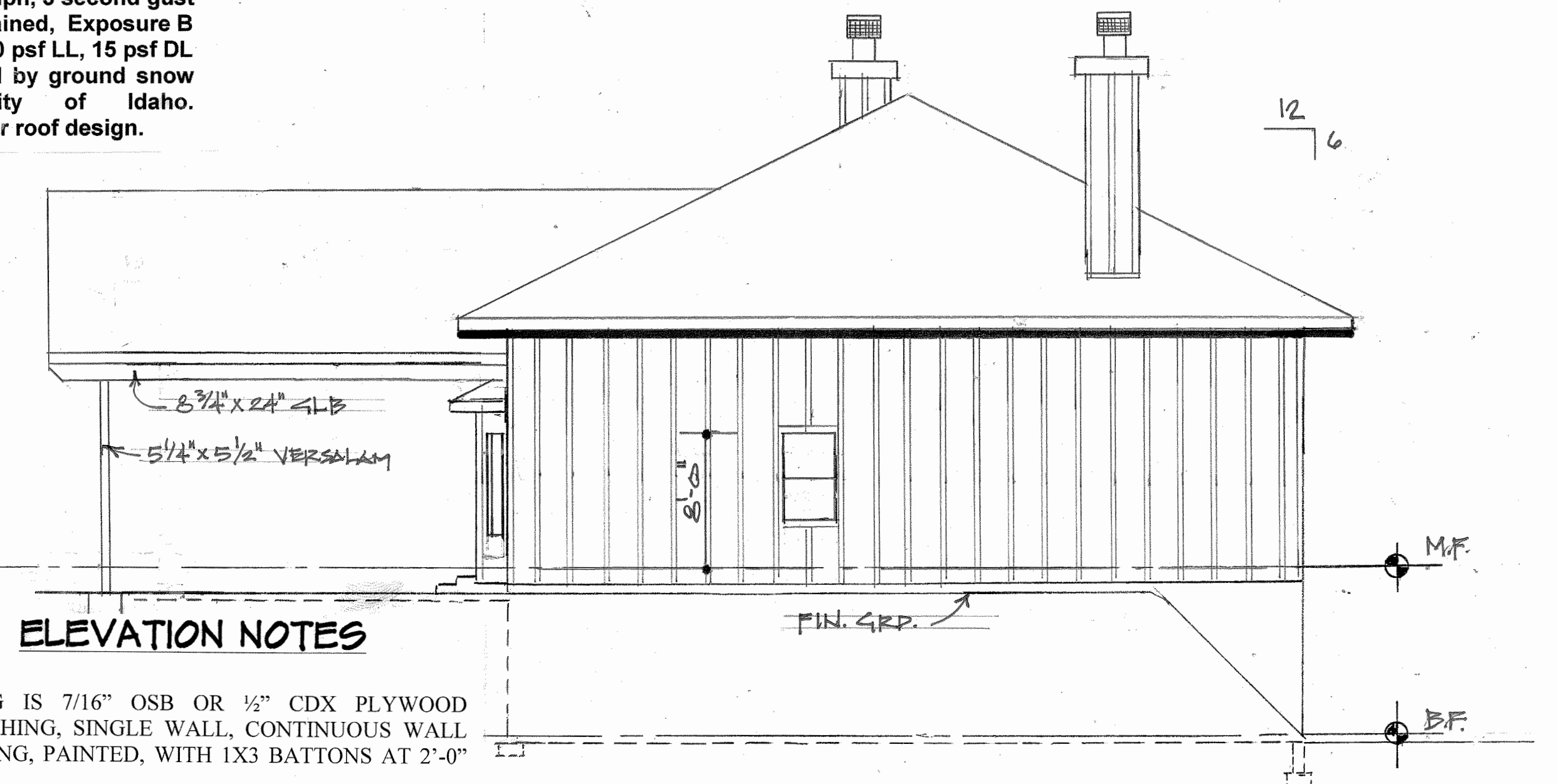
**DESIGN DATA**

This plan is intended to comply to the 2009 International Residential Code and the 2009 International Energy Conservation Code and all companion codes and all local and state ordinances and regulations.

Seismic Zone C  
Wind Loads 90 mph, 3 second gust mph sustained, Exposure B  
Snow Load Zone C 70 psf LL, 15 psf DL or as otherwise indicated by ground snow study from University of Idaho. Engineering is required for roof design.



**SOUTH ELEVATION**  
SCALE: 1/8" = 1'-0"



**WEST ELEVATION**  
SCALE: 1/8" = 1'-0"

**ELEVATION NOTES**

- SIDING IS 7/16" OSB OR 1/2" CDX PLYWOOD SHEATHING, SINGLE WALL, CONTINUOUS WALL BRACING, PAINTED, WITH 1X3 BATTONS AT 2'-0" O.C.
- 25 YEAR COMPOSITION ROOFING, OR EQUAL
- 36" EAVE OVERHANGS WITH 1"x 8" CHANNEL RUSTIC CEDAR SOFFIT WITH NO VENTS
- ALL CORNER TRIM, WINDOW, & DOOR TRIM TO BE 1"x3" SMART TRIM OR EQUAL

# ELEVATION EXAMPLE

This example is for demonstration purposes only. Please verify all specifics with the applicable building and land use codes.